

**NATIONAL ADAPTATION STRATEGY AND PLAN
OF ACTION (NASPA) PROJECT FOR NIGERIA**

**TOWARDS INTEGRATING ADAPTATION
STRATEGIES INTO POLICY FRAMEWORK,
NATIONAL AND STATE DEVELOPMENT**

EMMANUEL OLADIPO

**Presented at NASPA's Workshop/Training
Rockview Hotel, Abuja March 22 -23 2010**

What is Adaptation?

Adaptation encompasses action to reduce the vulnerability and build the resilience of ecological and social systems and economic sectors to present and future adverse effects of climate change in order to minimize the threats to life, human health, livelihoods, food security, assets, amenities, ecosystems and sustainable development.

Key Messages

Climate change poses a serious challenge to our social and economic development.

Despite oil and gas Nigeria' economy still more dependent on climate-sensitive natural resources (e.g. agriculture).

How development occurs has implications, in turn, for climate change and for the vulnerability of societies to its impacts.

Climate change adaptation needs to be brought into the mainstream of development policies, plans, strategies and programmes.

In adaptation terms, the issue is how development can be made more resilient to the impacts of climate change.

This could be at operational (infrastructure) or policy (e.g. poverty reduction and natural resource management)

Mainstreaming adaptation into development

Mainstreaming is the integration of policies and measures to address climate change into ongoing sectoral planning and management, so as to ensure the long-term viability and sustainability of sectoral and development investments.

It is seen as making more efficient and effective use of financial and human resources than designing, implementing and managing climate policy separately from sectoral policies.

Two Basic Approaches

Mainstreaming from top-down:

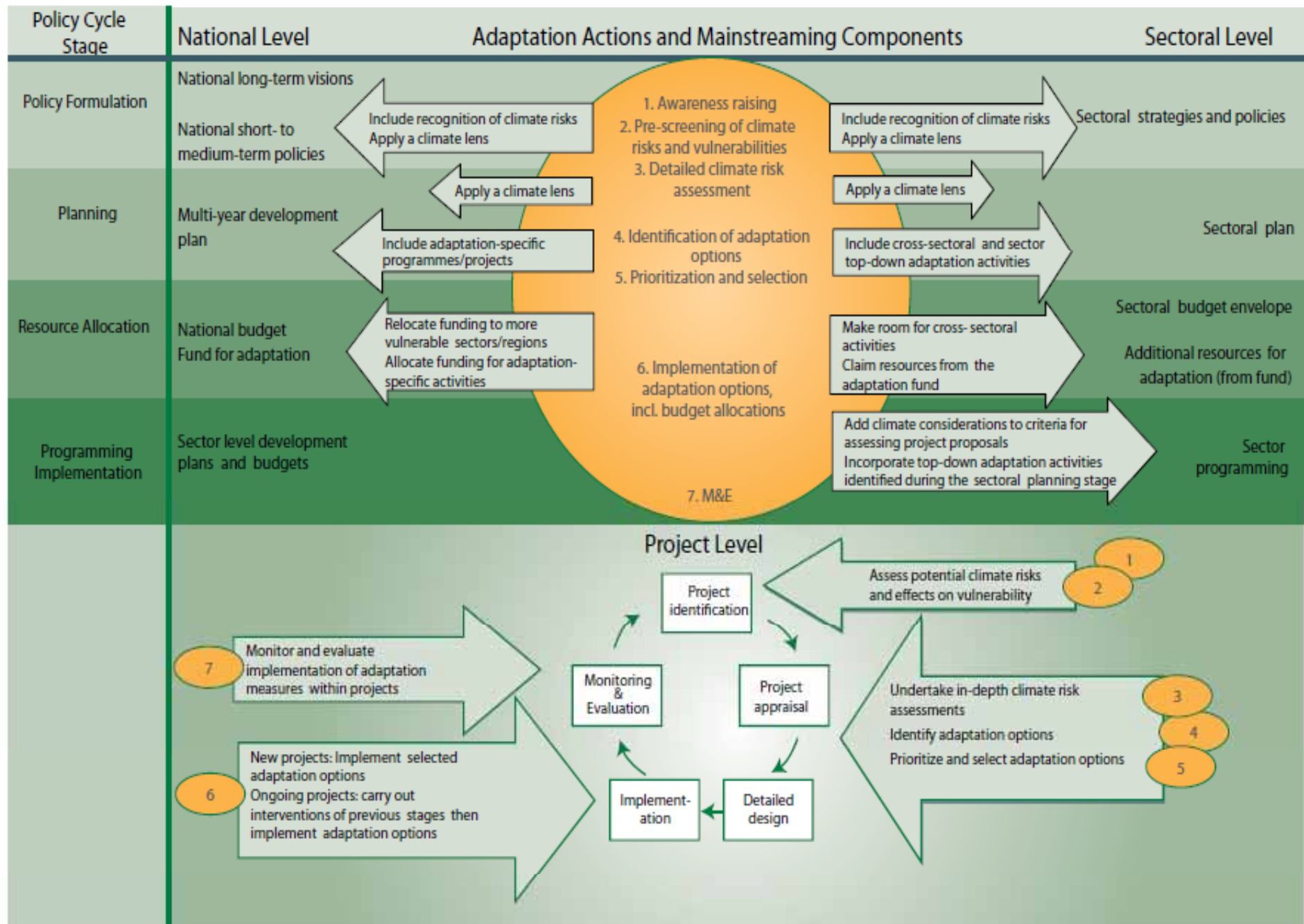
- ✓ General awareness building
- ✓ Addressing adaptation concerns in new and existing national (and regional) development policies, plans and projects (“we should do...”)
- ✓ Revising existing national development policies, plans and projects to address maladaptive elements (“we should avoid doing...”)

Mainstreaming from bottom-up:

- ✓ General awareness building
- ✓ Integrating adaptation components into new and existing community development projects and activities
- ✓ Revising existing local development projects and activities to address maladaptive elements

Why Mainstreaming

- Strengthen adaptive capacity of social and ecological systems.
- Further exploit the intricate synergies between development and climate change adaptation as reflected in:
 - i. The scientific evidence on climate variability and change;
 - ii. The observed current and projected future impacts of climate change on development;
 - iii. The concern that development activities may lead to “maladaptation”; and
 - iv. The recognition that development activities targeting and alleviating the root causes of vulnerability, and increasing the adaptive capacity of individuals and societies in general, have positive implications for climate change adaptation – even in cases where climate change has not been explicitly considered



Note: The figure draws on information from figures 7.2, 8.2, and 9.2 in OECD (2009).

KEY MAINSTREAMING ENTRY POINTS AND COMPONENTS AT THE SECTORAL LEVEL

Policy Cycle Stage	Sector Level	Adaptation Actions	Mainstreaming Components
Policy Formulation	Sectoral strategies and policies	<ol style="list-style-type: none"> 1. Include recognition of climate risks. 2. Apply climate lens to determine the vulnerability to climate risk including the possibility of maladaptation, etc. 	<ol style="list-style-type: none"> 1. Awareness raising 2. Pre-screening of climate risks and vulnerabilities 3 Detailed climate risk assessment
Planning	Sector Plan	<ol style="list-style-type: none"> 1. Apply a climate lens 2. Include cross-sectoral and sector top-down adaptation activities 	<ol style="list-style-type: none"> 1. Identification of adaptation options 2. Prioritization and selection
Resource Allocation	Sectoral budget envelope Additional resources for adaptation (from fund)	<ol style="list-style-type: none"> 1. Make room for cross- sectoral activities 2. Claim resources from the adaptation fund 	Implementation of adaptation options, including budget allocations
Programming Implementation	Sector programming	<ol style="list-style-type: none"> 1. Add climate considerations to criteria for assessing project proposals 2. Incorporate top-down adaptation activities Identified during the sectoral planning stage 	Implementation of adaptation options, including budget allocations. M&E

KEY MAINSTREAMING ENTRY POINTS AND COMPONENTS AT THE PROJECT LEVEL

Project Cycle	Adaptation Actions	Mainstreaming Components
Project Identification	Assess potential climate risks and effects on vulnerability	Awareness raising Pre-screening of climate risks and vulnerabilities
Project appraisal Detailed design	1. Undertake in-depth climate risk assessments 2. Identify adaptation options 3. Prioritize and select adaptation options	1. Detailed climate risk assessment 2. Identification of adaptation options 3. Prioritization and selection
Implementation	1. New projects: Implement selected adaptation options 2. Ongoing projects: carry out interventions of previous stages then implement adaptation options	Implementation of adaptation options, including budget allocations.
Monitoring and Evaluation	Monitor and evaluate implementation of adaptation measures within projects	Monitoring and Evaluation

Current Policy Frameworks

There are sectoral environment policies, strategies and plans that provide mainstreaming opportunities:

- i. National Environmental Policy
- ii. National Policy on Drought and Desertification
- iii. National Action Plan to Combat Desertification
- iv. Drought Preparedness Plan, 2007
- v. National Policy on Erosion and Flood Control, 2005;
- vi. Draft National Forest Policy, 2006
- vii. National Biodiversity Strategy and Action Plan, 2004

OTHERS:

- i. Nigerian Agricultural Policy;
- ii. National Water Policy;
- iii. Health Policy
- iv. Women Policy;
- v. Roll Back Malaria Plan of Action
- vi. Vision 2020;
- vii. NEEDS I & II and
- viii. 5th National Development Plan; etc

Current Policy Frameworks (Assessment)

- Most of these policies and plans only indicate anticipatory measures.
- Vision 2020 and 5th National Development Plan provide good opportunities for an integrated approach for mainstreaming climate adaptation into national development policies and plans

Vision 2020 Main Pillars:

- i. Guaranteeing the well-being and productivity of the people
- ii. Optimizing the key sources of economic growth
- iii. Fostering sustainable social and economic development

Current Policy Frameworks (Assessment)

In general, the effectiveness of environmental and other policies in Nigeria, with respect to climate change adaptation issues, is weak.

The policy framework for aligning human development and climate change management efforts through adaptation is largely undeveloped in the country.

The policies are very broad and are not in position to provide Nigeria the required focused response to adaptation concerns of the country.

While climate change is mentioned in some key government policies, Nigeria is yet to have any specific policies or strategies for climate change adaptation sector activities.

Nigeria needs to find a way by which exiting national policies, strategies and plans in different development sectors for sustainable development can be launched properly into the arena of adaptation climate change response.

Current Institutional Frameworks

- Special Climate Change Unit (SCCU);
- Inter-ministerial Committee on Climate Change
- Presidential Implementation Committee on the Clean Development Mechanism (CDM) in the Presidency.
- Nigerian Meteorological Agency (NIMET)
- Climate change research institutions:
 - ✓ Centre for Climate Change and Fresh Water Resources, Federal University of Technology Minna;
 - ✓ Centre for Energy , Research and Development, Obafemi Awolowo University Ile-Ife;
 - ✓ Abubakar Tafawa Balewa University, Bauchi
- NGOs and Development Partners (limited private sector involvement)
- Just like the policies and plans government institutions, NGO climate actors and others are not operating in a coherent and strategic manner – **no strategic platform for operation**

Review of Selected NAPAs

SUDAN - Oil rich, large size and different ecological systems, high level of poverty etc,

Rwanda - Agriculture and poverty

Malawi – Vision 2020 launched in 1998

Zambia – Agriculture and high rate of poverty

Common - Multi-phase approach

Phase I - Creation of a pluri-disciplinary team, including representatives from the office of the highest level of authority (in the case of Nigeria – Presidency).

Phase II - Evaluation of vulnerability to climate change, including in some instances, public consultations at state/region/province and local levels (may be divided into many sub-phases).

Phase III - Formulation of potential adaptation activities

They all indicate the following generic approach:

- ✓ Identify current and future vulnerabilities and climate risks
- ✓ Identify adaptation measures
- ✓ Evaluate and select adaptation options
- ✓ Evaluate “success” of adaptation

Lessons from Reviewed NAPAs

- Detailed sectoral studies on vulnerability must be available to have a list of potential options which could be the subject of a multicriteria analysis (MCA). These studies must be done within a well-formulated and accepted national policy framework (in our case Vision 2020). Participatory Vulnerability Assessment is the key.
- NASPA formulation is a longer-term process than what we are currently embarking upon in Nigeria and needs to be done within a structured programme.
- Multi-sectoral consultations at all levels are critical for proper identification of adaptation priorities and programmes.
- An objective method is imperative for the prioritization of the adaptation measures (e.g. the use of MCA) – Rwanda used this approach to select 6 key options from the initial 40.
- Good criteria selection and prioritization process is very critical.
- Transparency and consensus building are very crucial.
- Government endorsement at the highest level of authority is necessary.

Barriers to Mainstreaming

- Limited political will and commitment at all levels, particularly at the highest level of authority.
- Weak legal and policy framework for climate change issues (no specific legal framework that has been directed to ensure that climate change issues at various levels are properly institutionalized in the planning process)
- Institutional fragmentation (responsibility for climate change and disaster management separated between environment ministry, other institutions and agencies, including research institutions)
- Limited capacity, both institutional and individual, at the national, state and local level.
- High turnover of governments and loss of “climate champions” – may lead to loss of skills and capacity as well as the political will for continuity

Barriers to Mainstreaming (cont.)

- Awareness of actual climate risks mainly within a few government departments and no serious sectoral coordination.
- Inadequate public awareness on climate change and their potential impact on the social-economics, livelihood, and the ecosystem - hinders public participation in helping to shape climate change policy and legislation.
- Limited grassroots participation in policy-making process (but this is the level where there is persistent extreme poverty, poor health conditions, which make them more vulnerable to climate change).

Barriers to Mainstreaming (cont.)

- Limited private sector involvement in issues related to climate change adaptation.
- Inadequate funding
- Poor data and information on climate change impacts.
- Poor infrastructure.
- Current deliberate efforts to address the problem of climate change are more reactive than futuristic,

Overcoming Barriers

Informational:

Governments should engage more actively with all stakeholders and provide easily accessible climate risk information

Institutional/Regulatory

The Inter-Ministerial Committee on Climate Change and SCCU should be made more functional to manage national adaptation strategies

Regulatory issues should be considered from the start of the mainstreaming process

The capacity of Vision 2020 implementation mechanisms should be expanded to incorporate climate adaptation where possible

Overcoming Barriers (cont)

Institutional/Regulatory

Governments should ensure that any national adaptation strategy is consistent with existing policy criteria, development objectives and management structures

Policy-makers should look for policies that address current vulnerabilities and development needs, as well as potential climate risks

Actions to address vulnerability to climate change should be pursued through social development, service provision and improved natural resource management practices

Overcoming Barriers (cont.)

Inclusion

A broad range of stakeholders should be involved in climate change policy-making, including civil society, sectoral departments and senior policy-makers

Climate change adaptation should be informed by successful ground-level experiences in vulnerability reduction

NGOs should play a dominant role in building awareness and capacity at the local level

Overcoming Barriers (cont.)

Financing

Government should focus on internal resources for climate change adaptation (National Strategic Climate Change Trust Fund is a good step in the right direction)

Donors should provide incentives for particular adaptation actions, appropriate to local contexts

THANK YOU

MERCI